

2230 Lord, We Come to Ask Your Blessing



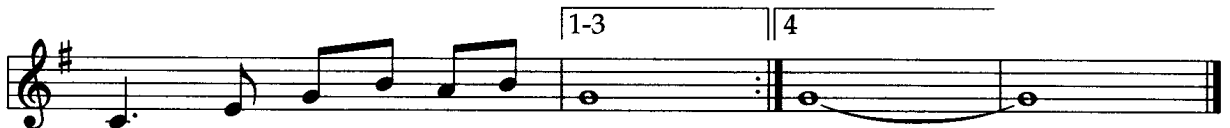
1. Lord, we come to ask your bless - ing
2. God of love, un - less you bless us
3. May our lov - ing be a shar - ing
4. Lord, we come to ask your bless - ing



on the love that makes us one;
 how can we each oth - er bless?
 of the gifts we each pos - sess;
 in the pres - ence of our friends:



here, as Chris - tians, to ac - knowl - edge
 On - ly as you live with - in us
 may no fail - ure of for - bear - ance
 Grant us joy that bless - es oth - ers,



you are Lord, and you a - lone.
 is there depth of hap - pi - ness.
 turn our love to bit - ter - ness.
 grant us love that nev - er ends. _____

WORDS: Fred Pratt Green
 MUSIC: W. Daniel Landes

SUGAR GROVE
 87.87

Words © 1989 Hope Publishing Co.; music © 1997 Abingdon Press, admin. by The Copyright Co.

2150

Lord, Be Glorified

1. In our lives, Lord, be glo - ri - fied,
 (my) (life)

be glo - ri - fied. In our lives, Lord,
 (my) (life)

Repeat ending (key of C) | Song ending (key of C)

be glo - ri - fied to - day. day.

- 2. In our homes ...
- 3. In your church ...
- 4. In your world ...

WORDS: Bob Kilpatrick (John 15:8; 1 Cor. 6:20; 2 Cor. 9:13; 2 Thess. 1:11-20)

MUSIC: Bob Kilpatrick

© 1978, 1986 Prism Tree Music, assigned 1998 to The Lorenz Corp.

LORD, BE GLORIFIED

Irregular

Optional modulation to D *Descant*

4. In your world, Lord,

Optional modulation to D

day. 4. In your world, Lord,

Detailed description: This system contains the first two staves of music. The top staff is a vocal line in treble clef, starting with a whole rest and then a descant in D major. The bottom staff is a piano accompaniment in bass clef, also starting with a whole rest and then playing chords in D major. The lyrics are '4. In your world, Lord,' and 'day. 4. In your world, Lord,'.

be glo-ri-fied, be glo-ri-fied. In your world, Lord,

be glo-ri-fied, be glo-ri-fied. In your world, Lord,

Detailed description: This system contains the next two staves of music. The top staff is a vocal line in treble clef, continuing the melody. The bottom staff is a piano accompaniment in bass clef, providing harmonic support. The lyrics are 'be glo-ri-fied, be glo-ri-fied. In your world, Lord,' and 'be glo-ri-fied, be glo-ri-fied. In your world, Lord,'.

slowly on repeat *Optional repeat ending rit.* *Song ending (key of D)*

be glo - ri - fied to - day. day.

Detailed description: This system contains the third staff of music. The top staff is a vocal line in treble clef, ending with a fermata. The bottom staff is a piano accompaniment in bass clef, also ending with a fermata. The lyrics are 'be glo - ri - fied to - day. day.'.

slowly on repeat *Optional repeat ending rit.* *Song ending (key of D)*

be glo - ri - fied to - day. day.

Detailed description: This system contains the fourth staff of music. The top staff is a vocal line in treble clef, ending with a fermata. The bottom staff is a piano accompaniment in bass clef, also ending with a fermata. The lyrics are 'be glo - ri - fied to - day. day.'.

THE NATURE OF THE CHURCH

2223 They'll Know We Are Christians by Our Love



1. We are one in the Spir-it, we are one in the Lord,
2. We will walk with each oth-er, we will walk hand in hand,
3. We will work with each oth-er, we will work side by side,
4. All praise to the Fa-ther, from whom all things come,



we are one in the Spir-it, we are one in the Lord,
we will walk with each oth-er, we will walk hand in hand,
we will work with each oth-er, we will work side by side,
and all praise to Christ Je-sus, God's on - ly Son,



and we pray that all u - ni - ty may one day be re-stored:
and to - geth - er we'll spread the news that God is in our land:
and we'll guard hu-man dig - ni - ty and save hu-man pride:
and all praise to the Spir - it, who makes us one:

Refrain



And they'll know we are Chris-tians by our love, by our



love; yes, they'll know we are Chris-tians by our love. _____

WORDS: Peter Scholtes (John 13:34-35; Eph. 4:4-6)

MUSIC: Peter Scholtes

ST. BRENDAN'S
76.76.86 with Refrain

© 1966 F.E.L. Publications, assigned 1991 to The Lorenz Corp.